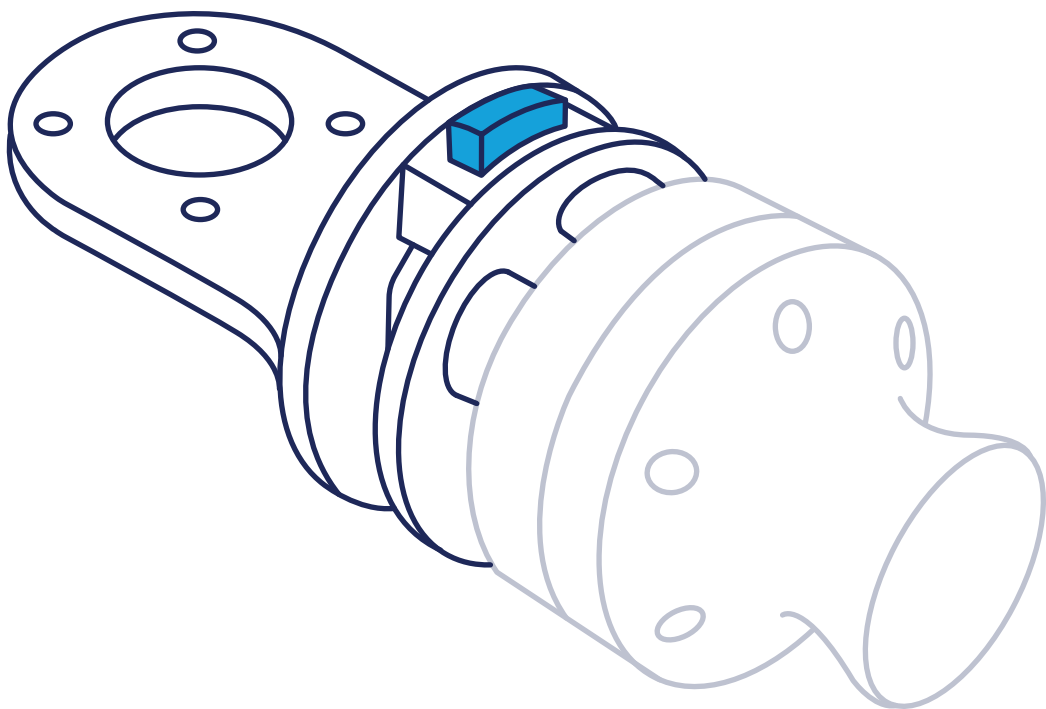


# FT QUICK CHANGER

Quick removal of tracker and joysticks



## Quick Start Guide

The quick changer was made to facilitate the quick release of the joystick and the FT tracker from the robot. That way you can avoid robot colisions with the joysticks after teaching if any recording or tool is altered.

1

Disconnect the FT Tracker cable. Press both buttons at the same time, hold and pull.

2

The tracker and joystick are now disconnected from robot.

3

To use the tracker again, click it into the quick changer and connect the FT cable.

Visit Nordbo Robotics Workshop for in depth setup guidance and software setup



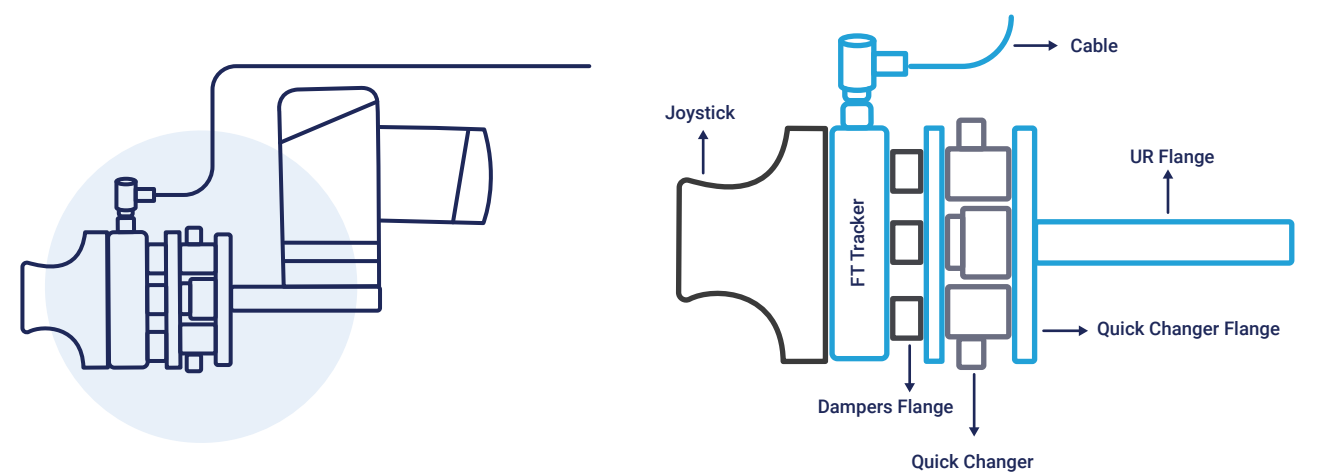
[www.workshop.nordbo-robotics.com/](http://www.workshop.nordbo-robotics.com/)

Visit Nordbo Robotics Partner Portal for Datasheets and more

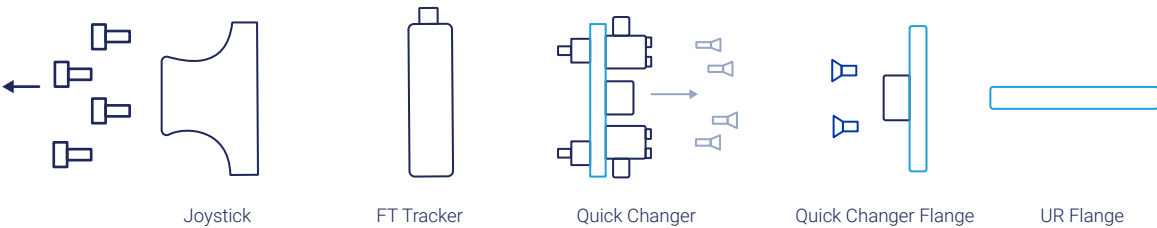


[www.nordbo.io/web/login](http://www.nordbo.io/web/login)

# FULL ASSEMBLY OVERVIEW OF PARTS



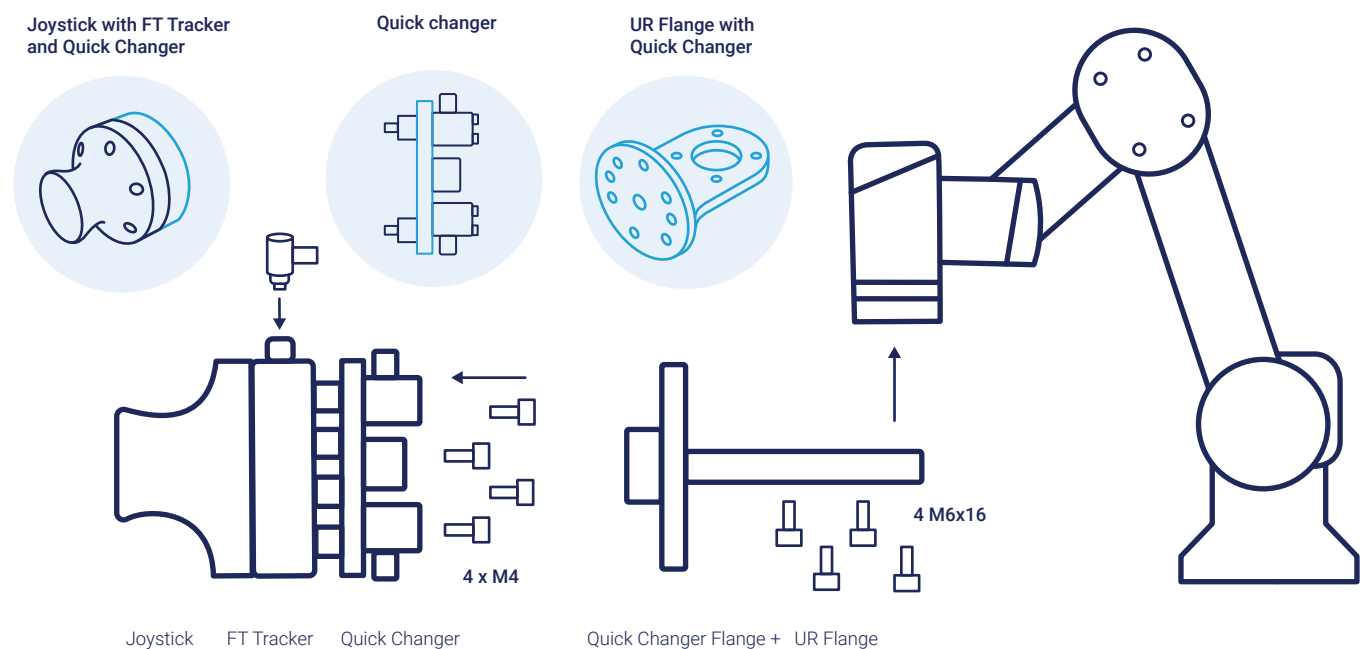
How to disassemble Quick Changer from FT Joystick, Tracker and Robot Flange



# MOUNTING DIRECTLY TO ROBOT

The FT Joystick can be used with a Quick Changer. If a custom mounting is desired, the Quick changer can be used with other joysticks, for example the FT Dual Hand Joystick.

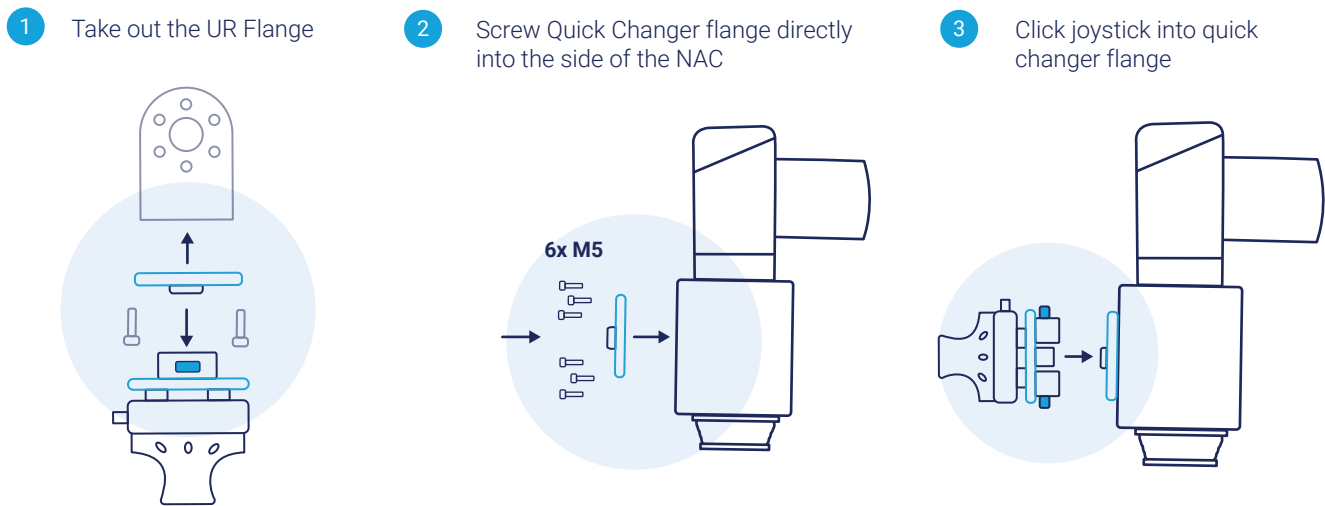
To use the Quick changer out of the box with the FT Joystick, screw the Quick changer to the back of the FT Sensor, afterwards screw the flange into the robot.



# MOUNTING DIRECTLY TO NAC

The UR flange can be removed from the Quick Changer flange by unscrewing the two M4 screws connecting them. This enables direct mounting on a NAC or other compatible product. Alternatively, you can replace the UR flange with one that fits another robot. NAC Set up can be seeing below:

The FT kit can be disassembled and used as pleased. It can, for example, be connected to the NAC instead of the UR Flange to the Robot.



# MOUNTING DIFFERENT JOYSTICK

