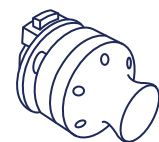
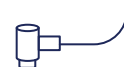


IN THE BOX

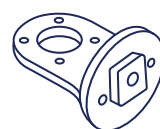
1x FT Tracker with Joystick and Quick Changer



1x Cable for FT Tracker



1x Quick Changer Flange for UR



1x Ethernet Cable



1x NRC-ETH Converter



4x M6x16mm Hex Socket (for mounting to robot)

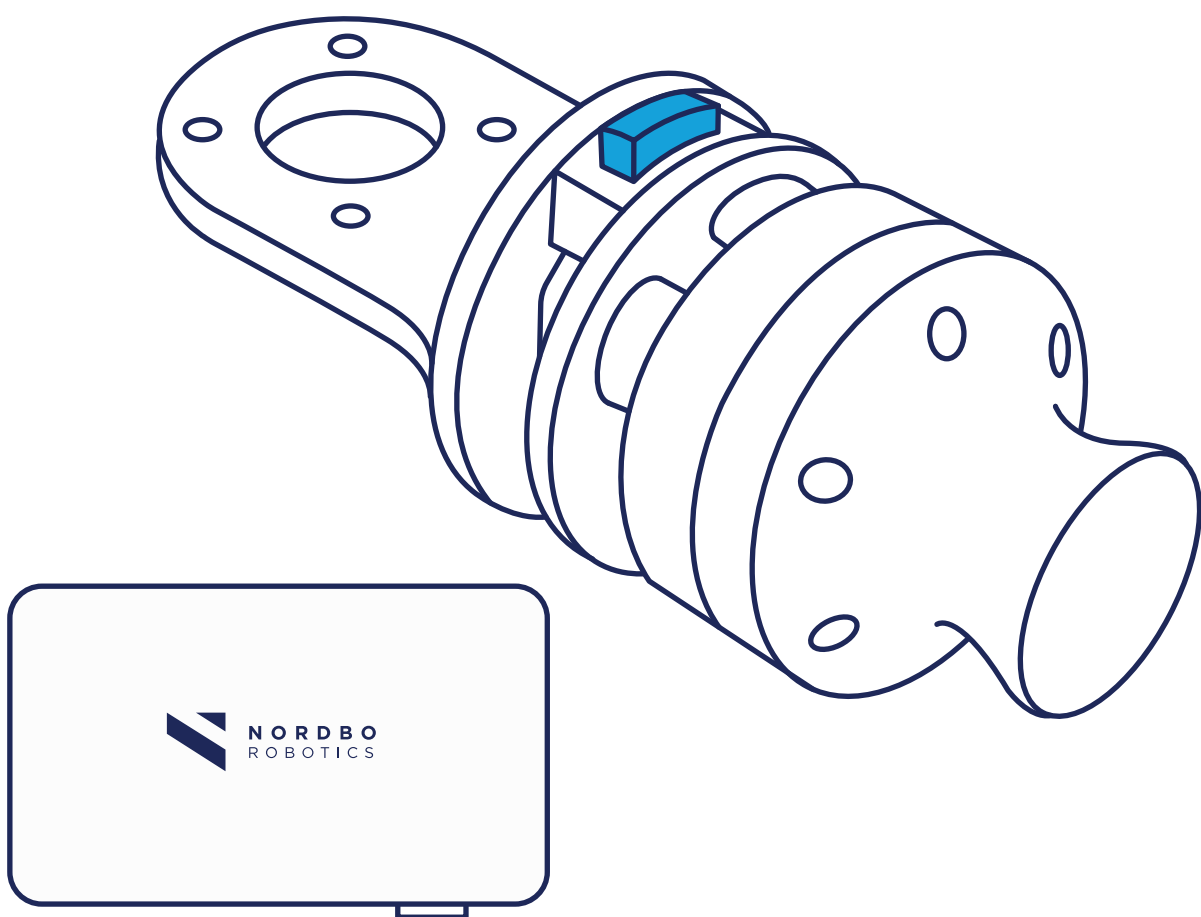


6x M4x16mm Hex Countersunk
(alternative mounting to NAC)



MIMIC FT TRACKER

No-code programming



Quick Start Guide

Visit Nordbo Robotics Workshop for in depth
setup guidance and software setup



www.workshop.nordbo-robotics.com/

Visit Nordbo Robotics Partner
Portal for Datasheets and more

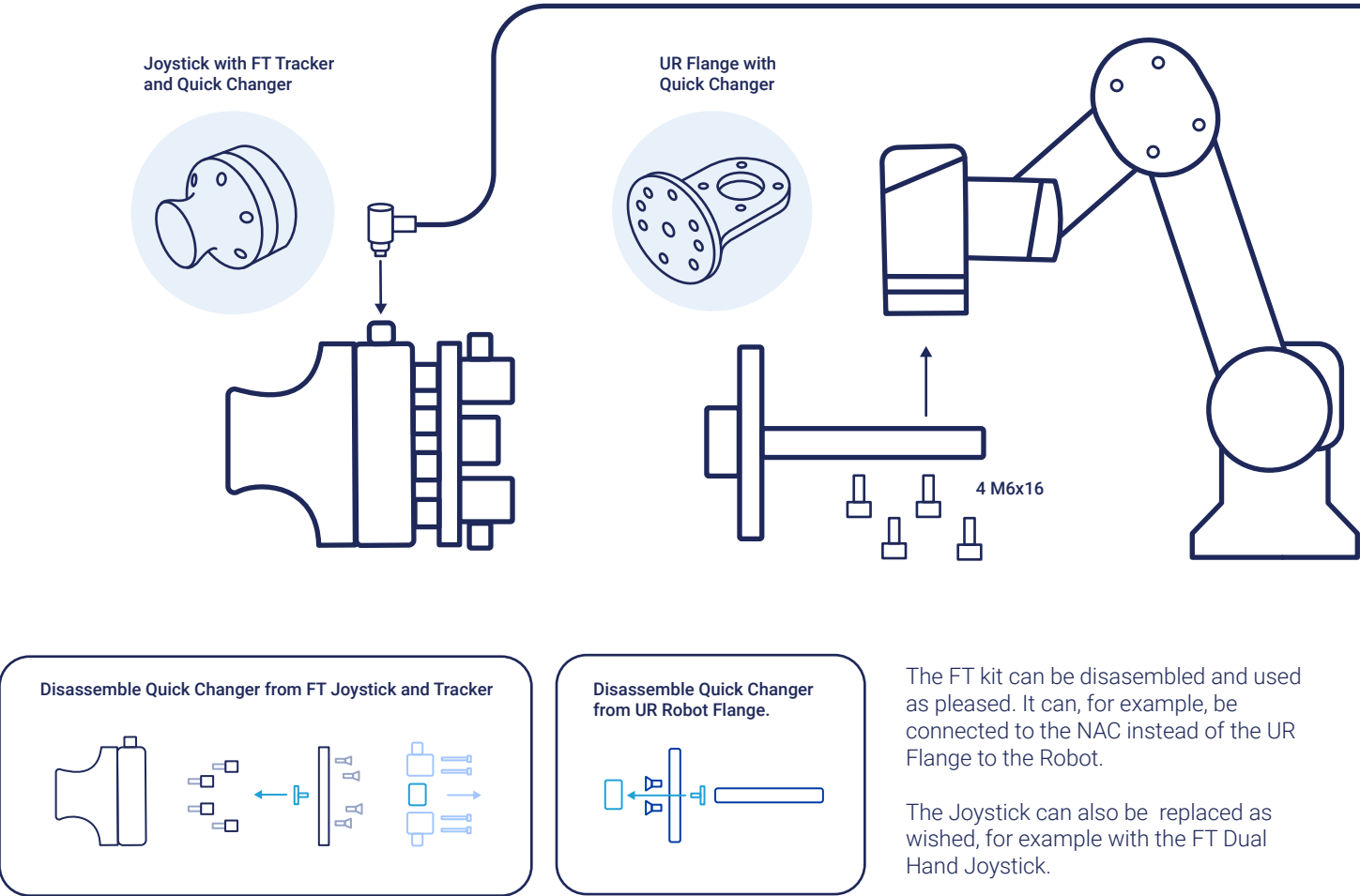


www.nordbo.io/web/login

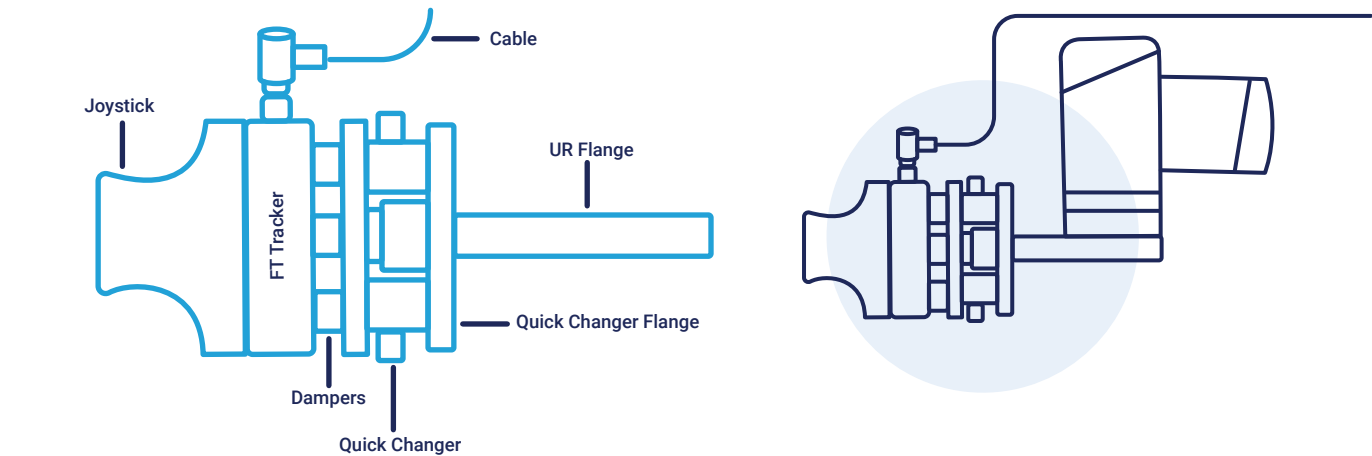
MOUNTING TO ROBOT

- 1

The FT Joystick comes pre-assembled with the Quick Changer. The Quick Changer can be removed from the FT Joystick if a custom mounting solution is desired.
- The UR flange can be removed from the Quick Changer flange by unscrewing the two M4 screws connecting them. This enables direct mounting on a NAC or other compatible product. Alternatively, you can replace the UR flange with one that fits another robot.



FULL ASSEMBLY OVERVIEW AND PARTS



HOW TO CONNECT THE CABLES

- 2

Connect the FT Tracker Cable to the NRC-ETH Converter and the FT Tracker. The cable is symmetrical, featuring identical connectors on both ends.
- 3

Connect both the power cable and the ethernet cable between the UR and the NRC-ETH Converter.

